



LED Lighting Solutions

WELCOME TO THE NEW VLED CATALOGUE

Venture Lighting products have always stood for high quality and reliability. Our new range of VLED lighting solutions offer our customers the same high standards and performance on which our great reputation has been built.

Fit VLED today



CONTENTS

**Introducing the perfect
LED replacement solutions
for your lighting.**

PAGE 5
LED MIDIBAYS

PAGE 11
LED PANELS

PAGE 15
LED DOWNLIGHTS

PAGE 19
LED FLOODLIGHTS

PAGE 25
LED HIGHBAYS

PAGE 29
LED STREET LIGHTS

PAGE 33
LED NON-CORROSIVES

PAGE 35
LED TUBES

PAGE 37
LED RETROFIT LAMPS

PAGE 41
LED TUNNEL LIGHTS

WHY CHOOSE VLED FROM VENTURE LIGHTING?

For over 30 years Venture Lighting have built a great reputation as the market leaders in metal halide lighting technology. Customers across Europe know they can rely on our superb quality, stock availability and technical support. We offer our customers, large and small, a level of service that's the envy of the industry.

And now we are bringing those same high standards to a brand new range of LED lighting that include Retrofit lamps, Luminaires, Midibays and Floodlights and more. With our VLED lighting solutions you're assured the very best LED technology promising huge energy savings and longer lamp life all backed up by unbeatable service.

Get to know our knowledgeable and friendly technical sales team today.





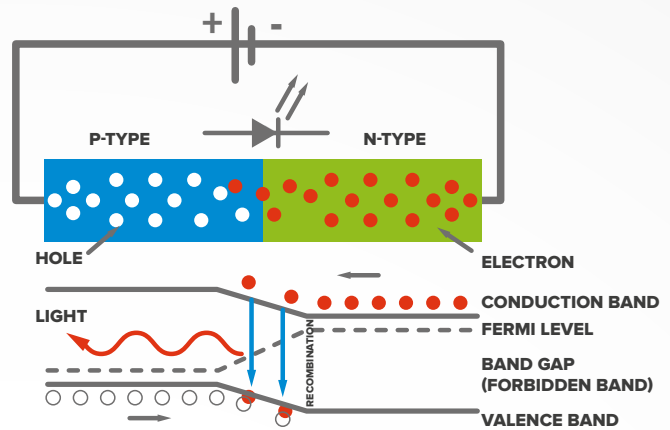
HOW LEDS WORK

LED stands for 'Light Emitting Diodes' and refers to a special type of diode that provides light when electricity passes through it.

The average light emitting diode does this through a 'p-n junction', formed of a p-type semiconductor (which contains positively charged carriers) and an n-type semiconductor (which contains electrons). The connection between these two types of semiconductors is a "p-n junction". These junctions are the building blocks of every semiconductor electronic device.

Light emitting diodes are modified to produce light radiation, and the electrons from n-type semiconductors simply connect to the carriers in the p-type semiconductor, and the electricity flow is unidirectional: from n to p.

When the junction is formed, electrons in the diode change state and start to emit photons: electrons move to a lower orbit automatically losing energy in the form of light. The more energy is lost, the more powerful the photons of light. This is when the colour changes and light is emitted by the LED.



LED design

LED lights and LED systems basically consist of three components:

Component 1: The LED

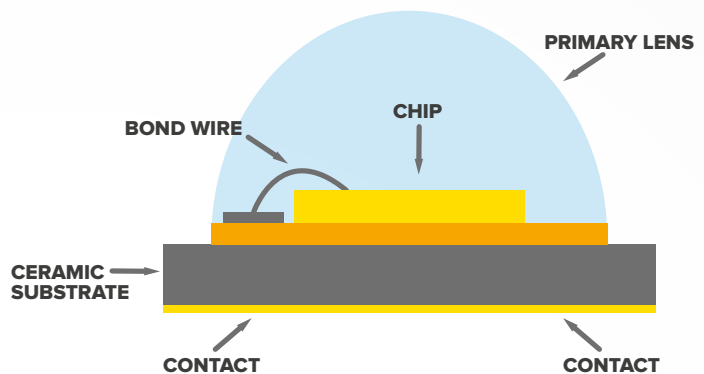
The LED chip is at the core. To protect it against environmental influences, the chip is mounted in a housing. This housing also determines the LED's radiation pattern through the primary lens.

Component 2: The circuit board

The individual LEDs are mounted on the circuit board. The LEDs are bonded to the control electronics through the conductors. The substrate ensures the heat dissipation.

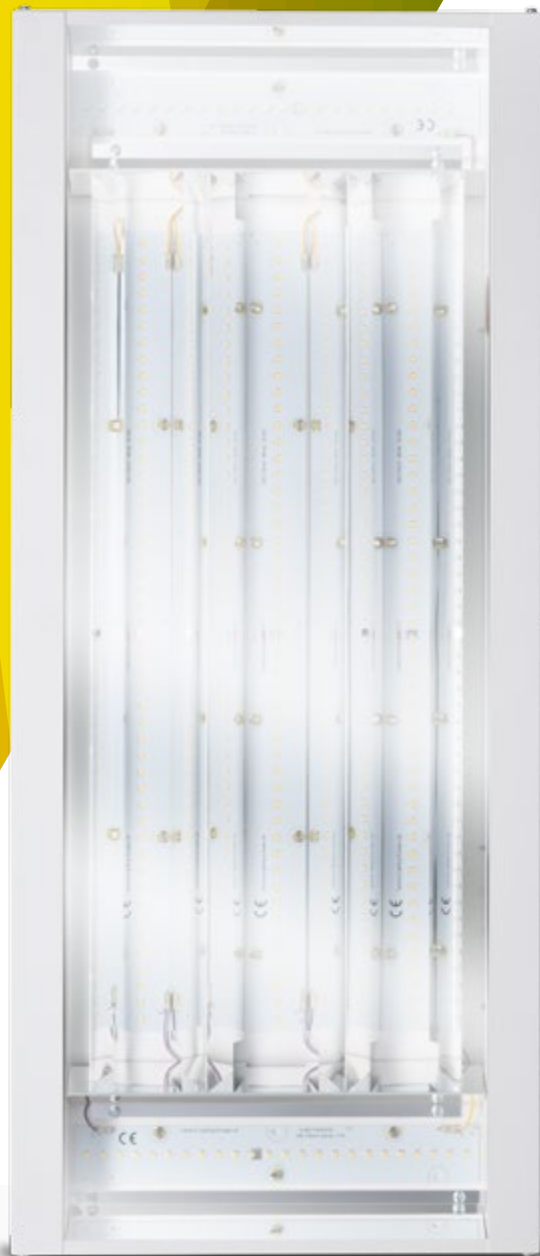
Component 3: The secondary optics

Secondary optics such as lenses, reflectors or diffusers are mounted on the circuit board and complete the LED solution.



LED MIDIBAYS

- 67W/100W/135W
- Exceeds 110 lumens per watt
- 50,000 hour life
- 5 year warranty
- 4,000K / 5,000K options
- Daylight & Occupancy sensors
- Clear or Opal cover options
- DALI dimmable
- Suspension kits available
- ECA Compliant



Light up every aisle, every space and every corner with VLED Midibays.

67W LED MIDIBAY

PROFESSIONAL



50,000
hours life

5 year
warranty

Performance Data

Input Power (W)	76
Rated Life (Hrs)	50000
Colour Temperature (K)	5000
Colour Rendering (Ra)	80

Physical Data

Dimensions (mm)	600 x 400 x 57
IP Rating	IP20

PART NO.	DIFFUSER	LUMENS
IND075	CLEAR	7,900

100W LED MIDIBAY

PROFESSIONAL



50,000
hours life

5 year
warranty

Performance Data

Input Power (W)	109
Rated Life (Hrs)	50000
Colour Temperature (K)	5000
Colour Rendering (Ra)	80

Physical Data

Dimensions (mm)	600 x 400 x 57
IP Rating	IP20

PART NO.	DIFFUSER	LUMENS
IND076	CLEAR	12,100

135W LED MIDIBAY

PROFESSIONAL



50,000
hours life

5 year
warranty

Performance Data

Input Power (W)	144
Rated Life (Hrs)	50000
Colour Temperature (K)	5000
Colour Rendering (Ra)	80

Physical Data

Dimensions (mm)	600 x 400 x 57
IP Rating	IP20

PART NO.	DIFFUSER	LUMENS
IND077	CLEAR	16,500

67W LED MIDIBAY WITH ACCESSORIES

PROFESSIONAL



Performance Data

Input Power (W)	76
Rated Life (Hrs)	50000
Colour Temperature (K)	5000
Colour Rendering (Ra)	80

Physical Data

Dimensions (mm)	600 x 400 x 57
IP Rating	IP20

PART NO.	DIFFUSER	LUMENS
IND087	OPAL	6,700

100W LED MIDIBAY WITH ACCESSORIES

PROFESSIONAL



Performance Data

Input Power (W)	109
Rated Life (Hrs)	50000
Colour Temperature (K)	5000
Colour Rendering (Ra)	80

Physical Data

Dimensions (mm)	600 x 400 x 57
IP Rating	IP20

PART NO.	DIFFUSER	LUMENS
IND088	OPAL	10,300

135W LED MIDIBAY WITH ACCESSORIES

PROFESSIONAL



Performance Data

Input Power (W)	144
Rated Life (Hrs)	50000
Colour Temperature (K)	5000
Colour Rendering (Ra)	80

Physical Data

Dimensions (mm)	600 x 400 x 57
IP Rating	IP20

PART NO.	DIFFUSER	LUMENS
IND089	OPAL	14,000

67W LED MIDIBAY

ELITE

50,000
hours life

5 year
warranty



Performance Data

Input Power (W)	76
Rated Life (Hrs)	50000
Colour Temperature (K)	5000
Colour Rendering (Ra)	80

Physical Data

Dimensions (mm)	830 x 352 x 59
IP Rating	IP20

PART NO.	BEAM	DIFFUSER	LUMENS
IND027	NARROW	CLEAR	8,400
IND030	WIDE	CLEAR	8,400
IND054	—	OPAL	7,100

100W LED MIDIBAY

ELITE

50,000
hours life

5 year
warranty



Performance Data

Input Power (W)	109
Rated Life (Hrs)	50000
Colour Temperature (K)	5000
Colour Rendering (Ra)	80

Physical Data

Dimensions (mm)	830 x 352 x 59
IP Rating	IP20

PART NO.	BEAM	DIFFUSER	LUMENS
IND028	WIDE	CLEAR	12,600
IND031	NARROW	CLEAR	12,600
IND055	—	OPAL	10,700

135W LED MIDIBAY

ELITE

50,000
hours life

5 year
warranty



Performance Data

Input Power (W)	144
Rated Life (Hrs)	50000
Colour Temperature (K)	5000
Colour Rendering (Ra)	80

Physical Data

Dimensions (mm)	830 x 352 x 59
IP Rating	IP20

PART NO.	BEAM	DIFFUSER	LUMENS
IND029	NARROW	CLEAR	17,000
IND032	WIDE	CLEAR	17,000
IND056	—	OPAL	14,500

67W LED MIDIBAY WITH ACCESSORIES

ELITE

BASE PRODUCT	WITH DALI	WITH SENSOR	WITH DALI & SENSOR
IND027	IND033	IND039	IND045
IND030	IND036	IND042	IND048
IND054	IND060	IND066	IND072



50,000
hours life

5 year
warranty

Performance Data

Input Power (W)	76
Rated Life (Hrs)	50000
Colour Temperature (K)	5000
Colour Rendering (Ra)	80

Physical Data

Dimensions (mm)	830 x 352 x 59
IP Rating	IP20

100W LED MIDIBAY WITH ACCESSORIES

ELITE

BASE PRODUCT	WITH DALI	WITH SENSOR	WITH DALI & SENSOR
IND028	IND034	IND040	IND046
IND031	IND037	IND043	IND049
IND055	IND061	IND067	IND073



50,000
hours life

5 year
warranty

Performance Data

Input Power (W)	109
Rated Life (Hrs)	50000
Colour Temperature (K)	5000
Colour Rendering (Ra)	80

Physical Data

Dimensions (mm)	830 x 352 x 59
IP Rating	IP20

135W LED MIDIBAY WITH ACCESSORIES

ELITE

BASE PRODUCT	WITH DALI	WITH SENSOR	WITH DALI & SENSOR
IND029	IND035	IND041	IND047
IND032	IND038	IND044	IND050
IND056	IND062	IND068	IND074



50,000
hours life

5 year
warranty

Performance Data

Input Power (W)	144
Rated Life (Hrs)	50000
Colour Temperature (K)	5000
Colour Rendering (Ra)	80

Physical Data

Dimensions (mm)	830 x 352 x 59
IP Rating	IP20

LED LoBAY

50,000 hours life

5 year warranty

- Available in 100W and 135W
- Exceeds 110 lumens per Watt
- 50,000hr Life / 5 year warranty
- 5000K colour temperature
- Clear Diffuser as standard – Opal Diffuser available for lower mounting heights.
- ECA Compliant
- Suitable for mounting heights up to 8 metre
- Plug and play with 2 metre flex for ease of installation

- IND123

12,100 luminaire lumens - replaces 250W, achieving impressive 60% energy saving

- IND124

16,500 luminaire lumens - replaces 400W, achieving impressive 65% energy saving



PART NO.	LUMENS	COLOUR TEMP.
IND123	12,100	5,000K
IND124	16,500	5,000K

ACCESSORIES

DFS001 – OPAL DIFFUSER

ACS018 – TRUNKING MOUNTING BRACKETS



LED PANELS

- 50% energy savings
- 50,000 hours life
- 5 year warranty
- 3,600 lumens at 38W
- Back lit & Edge lit Versions
- 4,000K - 5,200K
- IP40
- Surface mounting options
- Dali & Emergency Kits



**Things are looking
up with VLED panels.**

36W LED

PANEL 600MM X 600MM EDGE LIT



Performance Data

Input Power (W)	36
Rated Life (Hrs)	L70 50000Hrs
Colour Temperature (K)	4000/5000
Colour Rendering (Ra)	80

Physical Data

Dimensions (mm)	595 x 595 x 10
IP Rating	IP40

PART NO.	LUMENS	COLOUR TEMP.
PNL007	3,000	4,000K
PNL008	3,000	5,000K

38W LED

PANEL 600MM X 600MM BACK LIT



Performance Data

Input Power (W)	38
Rated Life (Hrs)	L70 50000Hrs
Colour Temperature (K)	4200/5200
Colour Rendering (Ra)	80

Physical Data

Dimensions (mm)	595 x 595 x 31
IP Rating	IP40 (with fixing clips)

PART NO.	LUMENS	COLOUR TEMP.
PNL001	3,600	4,200K
PNL002	3,600	5,200K
TPA RATED VERSIONS		
PNL011	3,600	4,200K
PNL012	3,600	5,200K

60W LED

PANEL 600MM X 1200MM EDGE LIT



Performance Data

Input Power (W)	60
Rated Life (Hrs)	L70 50000Hrs
Colour Temperature (K)	4000/5000
Colour Rendering (Ra)	80

Physical Data

Dimensions (mm)	595 x 1195 x 10
IP Rating	IP40

PART NO.	LUMENS	COLOUR TEMP.
PNL009	5,000	4,000K
PNL010	5,300	5,000K

THE LED PANELS FEATURED ON THIS PAGE ARE ALL SUPPLIED WITHOUT DRIVERS. SIMPLY REFER TO OUR RANGE OF FOUR PANEL KITS ON THE FACING PAGE TO SELECT THE PANEL WITH THE RIGHT DRIVER TO SUIT YOUR APPLICATION.

PANEL KITS

FOR USE WITH LED PANELS

PART NO.	TYPE
KIT01	WITH DRIVER
KIT02	WITH DALI
KIT03	WITH EMERGENCY
KIT04	WITH DALI EMG

Whatever your LED panel lighting application, our range of Panel Kits will provide the right type of driver specification to meet your requirements.

MOUNTING KITS

FOR USE WITH LED PANELS

PART NO.	TYPE
ACS001	SURFACE MOUNTING KIT PRO, FOR PANEL, 600X600MM
ACS014	SURFACE MOUNT KIT FOR EDGE LIT PANELS 600X600MM OR 600X1200MM
ACS015	SUSPEND MOUNT KIT FOR EDGE LIT PANELS
ACS016	RECESS MOUNT KIT FOR EDGE LIT PANELS

We also have kits for applications where the LED panels are suspended from the ceiling. Please contact us for more details.

ACS001



ACS014



LED PANELS PRODUCT SELECTOR

PART NO.	DESCRIPTION	WATTAGE	LUMENS	DRIVER TYPE	COLOUR TEMP.	DIMENSIONS (mm)
PNL007	36W LED PANEL 600mm x 600mm EDGE LIT 840	36	2910	NO DRIVER	4000	600x600
PNL008	36W LED PANEL 600mm x 600mm EDGE LIT 850	36	3000	NO DRIVER	5000	600x600
PNL001	38W LED PANEL 600mm x 600mm BACKLIT 840	38	3600	NO DRIVER	4200	600x600
PNL002	38W LED PANEL 600mm x 600mm BACKLIT 850	38	3600	NO DRIVER	5200	600x600
PNL011	38W LED PANEL 600mm x 600mm TPA RATED 840	38	3600	NO DRIVER	4200	600x600
PNL012	38W LED PANEL 600mm x 600mm TPA RATED 850	38	3600	NO DRIVER	5200	600x600
PNL009	60W LED PANEL 600mm x 1200mm EDGE LIT 840	60	5400	NO DRIVER	4000	600x1200
PNL010	60W LED PANEL 600mm x 1200mm EDGE LIT 850	60	5400	NO DRIVER	5000	600x1200
FOR THE PANEL KIT ADD KIT CODE BELOW AFTER THE PANEL NUMBER (PNL001-KIT01 FOR 38W PANEL WITH DRIVER FOR EXAMPLE)						
KIT01	WITH DRIVER					
KIT02	WITH DALI					
KIT03	WITH EMERGENCY					
KIT04	WITH DALI & EMERGENCY					

The LED panels featured above are all supplied WITHOUT drivers. Simply refer to our range of four Panel Kits on the previous page to select the panel with the right driver to suit your application. Whatever your LED panel lighting application, our range of Panel Kits will provide the right type of driver specification to meet your requirements.

LED PANELS	FLUORESCENT MODULES
36W	Replaces up to 4x14W
38W	Replaces up to 4x14W
60W	Replaces up to 4x36W



ENERGY SAVING

**LEDs MAINLY EMIT LIGHT
and don't waste energy on
unwanted heat.**

**Energy efficient LEDs cut costs
and energy consumption.**

LED DOWNLIGHTS

- 15W - 30W
- Standard driver included
- Diffuser and reflector versions
- UGR <19%
- 30,000 hours life
- 3,000K / 4,000K options
- IP20
- 59mm - 105mm recess depths
- 80Ra



**Down with your energy
costs with VLED Downlights.**



15W LED DOWNLIGHT DIFFUSED

Performance Data

Input Power (W)	15
Rated Life (Hrs)	30000
Colour Temperature (K)	3000/4000
Colour Rendering (Ra)	80

Physical Data

Dimensions (mm)	132 x 59 Cut Out Size 108
IP Rating	IP20

PART NO.	LUMENS	COLOUR TEMP.
DWL001	900	3,000K
DWL002	1,000	4,000K

20W LED DOWNLIGHT DIFFUSED

Performance Data

Input Power (W)	20
Rated Life (Hrs)	30000
Colour Temperature (K)	3000/4000
Colour Rendering (Ra)	80

Physical Data

Dimensions (mm)	182 x 81 Cut Out Size 160
IP Rating	IP20

PART NO.	LUMENS	COLOUR TEMP.
DWL005	1,300	3,000K
DWL006	1,500	4,000K

30W LED DOWNLIGHT DIFFUSED

Performance Data

Input Power (W)	30
Rated Life (Hrs)	30000
Colour Temperature (K)	3000/4000
Colour Rendering (Ra)	80

Physical Data

Dimensions (mm)	240 x 105 Cut Out Size 210
IP Rating	IP20

PART NO.	LUMENS	COLOUR TEMP.
DWL009	1,900	3,000K
DWL010	2,100	4,000K



15W LED DOWNLIGHT REFLECTOR

Performance Data

Input Power (W)	15
Rated Life (Hrs)	30000
Colour Temperature (K)	3000/4000
Colour Rendering (Ra)	80

Physical Data

Dimensions (mm)	132 x 59 Cut Out Size 108
IP Rating	IP20

PART NO.	LUMENS	COLOUR TEMP.
DWL003	1,000	3,000K
DWL004	1,100	4,000K

20W LED DOWNLIGHT REFLECTOR

Performance Data

Input Power (W)	20
Rated Life (Hrs)	30000
Colour Temperature (K)	3000/4000
Colour Rendering (Ra)	80

Physical Data

Dimensions (mm)	182 x 81 Cut Out Size 160
IP Rating	IP20

PART NO.	LUMENS	COLOUR TEMP.
DWL007	1,500	3,000K
DWL008	1,600	4,000K

30W LED DOWNLIGHT REFLECTOR

Performance Data

Input Power (W)	30
Rated Life (Hrs)	30000
Colour Temperature (K)	3000/4000
Colour Rendering (Ra)	80

Physical Data

Dimensions (mm)	240 x 105 Cut Out Size 210
IP Rating	IP20

PART NO.	LUMENS	COLOUR TEMP.
DWL011	2,300	3,000K
DWL012	2,400	4,000K

LED DOWNLIGHTS PRODUCT SELECTOR

PART NO.	DESCRIPTION	WATTAGE	BEAM ANGLE	LUMENS	COLOUR TEMP.	DIAMETER (mm)	CUT OUT (mm)
DWL001	15W DOWNLIGHT DIFFUSED 830	15	70°	900	3000	132mm	108mm
DWL002	15W DOWNLIGHT DIFFUSED 840	15	70°	1000	4000	132mm	108mm
DWL003	15W DOWNLIGHT REFLECTOR 830	15	70°	1000	3000	132mm	108mm
DWL004	15W DOWNLIGHT REFLECTOR 840	15	70°	1100	4000	132mm	108mm
DWL005	20W DOWNLIGHT DIFFUSED 830	20	70°	1300	3000	182mm	160mm
DWL006	20W DOWNLIGHT DIFFUSED 840	20	70°	1500	4000	182mm	160mm
DWL007	20W DOWNLIGHT REFLECTOR 830	20	70°	1500	3000	182mm	160mm
DWL008	20W DOWNLIGHT REFLECTOR 840	20	70°	1600	4000	182mm	160mm
DWL009	30W DOWNLIGHT DIFFUSED 830	30	70°	1900	3000	240mm	210mm
DWL010	30W DOWNLIGHT DIFFUSED 840	30	70°	2100	4000	240mm	210mm
DWL011	30W DOWNLIGHT REFLECTOR 830	30	70°	2300	3000	240mm	210mm
DWL012	30W DOWNLIGHT REFLECTOR 840	30	70°	2400	4000	240mm	210mm

LED DOWNLIGHTS	COMPACT FLUORESCENT (CFL)
15W	Replaces up to 18W
20W	Replaces up to 26W
30W	Replaces up to 42W



LONGER LIFE

LEDs HARDLY GENERATE ANY HEAT and so they don't overheat and fail.

Save time and money on lamp replacement and maintenance.

LED FLOODLIGHTS

- 10W - 180W
- 50,000 hour life
- 5 year warranty
- 3,000K - 5,700K options
- Integrated Driver Technology (IDT)
- IP65
- 15° / 30° / 60° optics



**See the difference in improved
output and energy efficiency
with VLED floodlights.**

30W LED

IDT FLOODLIGHT 30 DEGREE



Performance Data

Input Power (W)	30
Rated Life (Hrs)	50000
Colour Temperature (K)	5700
Colour Rendering (Ra)	80

Physical Data

Dimensions (mm)	226 x 271 x 185
IP Rating	IP65

PART NO.	LUMENS	COLOUR TEMP.
FLD021	3,000	5,700K

60W LED

IDT FLOODLIGHT



Performance Data

Input Power (W)	60
Rated Life (Hrs)	50000
Colour Temperature (K)	4000/5700
Colour Rendering (Ra)	80

Physical Data

Dimensions (mm)	350 x 271 x 213
IP Rating	IP65

PART NO.	LUMENS	COLOUR TEMP.	DEGREE
FLD011	6,000	4,000K	60
FLD016	6,000	5,700K	60
FLD022	6,000	5,700K	30
FLD027	6,000	5,700K	15

90W LED

IDT FLOODLIGHT



Performance Data

Input Power (W)	90
Rated Life (Hrs)	50000
Colour Temperature (K)	4000/5700
Colour Rendering (Ra)	80

Physical Data

Dimensions (mm)	461 x 271 x 213
IP Rating	IP65

PART NO.	LUMENS	COLOUR TEMP.	DEGREE
FLD012	9,000	4,000K	60
FLD017	9,000	5,700K	60
FLD023	9,000	5,700K	30
FLD028	9,000	5,700K	15

120W LED IDT FLOODLIGHT



50,000
hours life

5 year
warranty

Performance Data

Input Power (W)	120
Rated Life (Hrs)	50000
Colour Temperature (K)	4000/5700
Colour Rendering (Ra)	80

Physical Data

Dimensions (mm)	572 x 271 x 213
IP Rating	IP65

PART NO.	LUMENS	COLOUR TEMP.	DEGREE
FLD013	12,000	4,000K	60
FLD018	12,000	5,700K	60
FLD024	12,000	5,700K	30
FLD029	12,000	5,700K	15

150W LED IDT FLOODLIGHT



50,000
hours life

5 year
warranty

Performance Data

Input Power (W)	150
Rated Life (Hrs)	50000
Colour Temperature (K)	4000/5700
Colour Rendering (Ra)	80

Physical Data

Dimensions (mm)	683 x 271 x 213
IP Rating	IP65

PART NO.	LUMENS	COLOUR TEMP.	DEGREE
FLD014	15,000	4,000K	60
FLD019	15,000	5,700K	60
FLD025	15,000	5,700K	30
FLD030	15,000	5,700K	15

180W LED IDT FLOODLIGHT



50,000
hours life

5 year
warranty

Performance Data

Input Power (W)	180
Rated Life (Hrs)	50000
Colour Temperature (K)	4000/5700
Colour Rendering (Ra)	80

Physical Data

Dimensions (mm)	794 x 271 x 213
IP Rating	IP65

PART NO.	LUMENS	COLOUR TEMP.	DEGREE
FLD015	18,000	4,000K	60
FLD020	18,000	5,700K	60
FLD026	18,000	5,700K	30
FLD031	18,000	5,700K	15

10W LED FLOODLIGHT 120 DEGREE



Performance Data

Input Power (W)	10
Rated Life (Hrs)	30000
Colour Temperature (K)	3000/5700
Colour Rendering (Ra)	80

Physical Data

Dimensions (mm)	180 x 141 x 65
IP Rating	IP65

PART NO.	LUMENS	COLOUR TEMP.
FLD001	600	5,700K
FLD007	500	3,000K

20W LED FLOODLIGHT 120 DEGREE



Performance Data

Input Power (W)	20
Rated Life (Hrs)	30000
Colour Temperature (K)	3000/5700
Colour Rendering (Ra)	80

Physical Data

Dimensions (mm)	180 x 141 x 65
IP Rating	IP65

PART NO.	LUMENS	COLOUR TEMP.
FLD002	1,200	5,700K
FLD008	1,000	3,000K

30W LED FLOODLIGHT 120 DEGREE



Performance Data

Input Power (W)	30
Rated Life (Hrs)	30000
Colour Temperature (K)	3000/5700
Colour Rendering (Ra)	80

Physical Data

Dimensions (mm)	225 x 186 x 70
IP Rating	IP65

PART NO.	LUMENS	COLOUR TEMP.
FLD003	1,800	5,700K
FLD009	1,500	3,000K

50W LED

FLOODLIGHT 120 DEGREE



Performance Data

Input Power (W)	50
Rated Life (Hrs)	30000
Colour Temperature (K)	3000/5700
Colour Rendering (Ra)	80

Physical Data

Dimensions (mm)	270 x 237 x 90
IP Rating	IP65

PART NO.	LUMENS	COLOUR TEMP.
FLD004	3,000	5,700K
FLD010	2,500	3,000K

90W LED

FLOODLIGHT 60 DEGREE 857



Performance Data

Input Power (W)	90
Rated Life (Hrs)	30000
Colour Temperature (K)	5700
Colour Rendering (Ra)	80

Physical Data

Dimensions (mm)	248 x 179 x 62
IP Rating	IP65

PART NO.	LUMENS	COLOUR TEMP.
FLD005	7,200	5,700K

150W LED

FLOODLIGHT 60 DEGREE 857



Performance Data

Input Power (W)	150
Rated Life (Hrs)	30000
Colour Temperature (K)	5700
Colour Rendering (Ra)	80

Physical Data

Dimensions (mm)	310 x 231 x 69
IP Rating	IP65

PART NO.	LUMENS	COLOUR TEMP.
FLD006	12,000	5,700K

LED FLOODLIGHTS PRODUCT SELECTOR

PART NO.	DESCRIPTION	WATTAGE	BEAM ANGLE	LUMENS	COLOUR TEMP.	IP RATING
FLD001	10W FLOODLIGHT 120 DEGREE 857	10	120°	600	5700	IP65
FLD007	10W FLOODLIGHT 120 DEGREE 830	10	120°	500	3000	IP65
FLD002	20W FLOODLIGHT 120 DEGREE 857	20	120°	1200	5700	IP65
FLD008	20W FLOODLIGHT 120 DEGREE 830	20	120°	1000	3000	IP65
FLD003	30W FLOODLIGHT 120 DEGREE 857	30	120°	1800	5700	IP65
FLD009	30W FLOODLIGHT 120 DEGREE 830	30	120°	1500	3000	IP65
FLD021	30W IDT FLOODLIGHT 30 DEGREE 857	30	30°	3000	5700	IP65
FLD004	50W FLOODLIGHT 120 DEGREE 857	50	120°	3000	5700	IP65
FLD010	50W FLOODLIGHT 120 DEGREE 830	50	120°	2500	3000	IP65
FLD011	60W IDT FLOODLIGHT 60 DEGREE 840	60	60°	6000	4000	IP65
FLD016	60W IDT FLOODLIGHT 60 DEGREE 857	60	60°	6000	5700	IP65
FLD022	60W IDT FLOODLIGHT 30 DEGREE 857	60	30°	6000	5700	IP65
FLD027	60W IDT FLOODLIGHT 15 DEGREE 857	60	15°	6000	5700	IP65
FLD005	90W FLOODLIGHT 60 DEGREE 857	90	60°	7200	5700	IP65
FLD012	90W IDT FLOODLIGHT 60 DEGREE 840	90	60°	9000	4000	IP65
FLD017	90W IDT FLOODLIGHT 60 DEGREE 857	90	60°	9000	5700	IP65
FLD023	90W IDT FLOODLIGHT 30 DEGREE 857	90	30°	9000	5700	IP65
FLD028	90W IDT FLOODLIGHT 15 DEGREE 857	90	15°	9000	5700	IP65
FLD013	120W IDT FLOODLIGHT 60 DEGREE 840	120	60°	12000	4000	IP65
FLD018	120W IDT FLOODLIGHT 60 DEGREE 857	120	60°	12000	5700	IP65
FLD024	120W IDT FLOODLIGHT 30 DEGREE 857	120	30°	12000	5700	IP65
FLD029	120W IDT FLOODLIGHT 15 DEGREE 857	120	15°	12000	5700	IP65
FLD006	150W FLOODLIGHT 60 DEGREE 857	150	60°	12000	5700	IP65
FLD014	150W IDT FLOODLIGHT 60 DEGREE 840	150	60°	15000	4000	IP65
FLD019	150W IDT FLOODLIGHT 60 DEGREE 857	150	60°	15000	5700	IP65
FLD025	150W IDT FLOODLIGHT 30 DEGREE 857	150	30°	15000	5700	IP65
FLD030	150W IDT FLOODLIGHT 15 DEGREE 857	150	15°	15000	5700	IP65
FLD015	180W IDT FLOODLIGHT 60 DEGREE 840	180	60°	18000	4000	IP65
FLD020	180W IDT FLOODLIGHT 60 DEGREE 857	180	60°	18000	5700	IP65
FLD026	180W IDT FLOODLIGHT 30 DEGREE 857	180	30°	18000	5700	IP65
FLD031	180W IDT FLOODLIGHT 15 DEGREE 857	180	15°	18000	5700	IP65

LED HIGHBAYS

LED HIGHBAYS

- 60W - 180W
- 50,000 hours life
- 5,700K
- Integrated Driver Technology (IDT)
- IP65
- 60° beam angle

HIGHBAY PRO

- 100W - 200W
- Upto 20,000 lumens
- 60° / 70° / 90° reflector options
- 4,000K / 5,000K



**Make light work of
workspaces with VLED
Highbay.**

60W LED IDT Highbay 60 Degree 857



50,000
hours life

5 year
warranty

PART NO.	LUMENS	COLOUR TEMP.
IND022	6,000	5,700K

Performance Data

Input Power (W)	60
Rated Life (Hrs)	50000
Colour Temperature (K)	5700
Colour Rendering (Ra)	80

Physical Data

Dimensions (mm)	350 x 271 x 213
IP Rating	IP65

90W LED IDT Highbay 60 Degree 857



50,000
hours life

5 year
warranty

PART NO.	LUMENS	COLOUR TEMP.
IND023	9,000	5,700K

Performance Data

Input Power (W)	90
Rated Life (Hrs)	50000
Colour Temperature (K)	5700
Colour Rendering (Ra)	80

Physical Data

Dimensions (mm)	461 x 271 x 213
IP Rating	IP65

120W LED IDT Highbay 60 Degree 857



50,000
hours life

5 year
warranty

PART NO.	LUMENS	COLOUR TEMP.
IND024	12,000	5,700K

Performance Data

Input Power (W)	120
Rated Life (Hrs)	50000
Colour Temperature (K)	5700
Colour Rendering (Ra)	80

Physical Data

Dimensions (mm)	572 x 271 x 213
IP Rating	IP65

150W LED

IDT Highbay 60 Degree 857



50,000
hours life

5 year
warranty

PART NO.	LUMENS	COLOUR TEMP.
IND025	15,000	5,700K

Performance Data

Input Power (W)	150
Rated Life (Hrs)	50000
Colour Temperature (K)	5700
Colour Rendering (Ra)	80

Physical Data

Dimensions (mm)	683 x 271 x 213
IP Rating	IP65

180W LED

IDT Highbay 60 Degree 857



50,000
hours life

5 year
warranty

PART NO.	LUMENS	COLOUR TEMP.
IND026	18,000	5,700K

Performance Data

Input Power (W)	180
Rated Life (Hrs)	50000
Colour Temperature (K)	5700
Colour Rendering (Ra)	80

Physical Data

Dimensions (mm)	794 x 271 x 213
IP Rating	IP65

LED Highbay Lights Product Selector

PART NO.	DESCRIPTION	WATTAGE	BEAM ANGLE	LUMENS	COLOUR TEMP.	IP RATING
IND022	60W IDT Highbay 60 Degree 857	60	60°	6000	5700	IP65
IND023	90W IDT Highbay 60 Degree 857	90	60°	9000	5700	IP65
IND024	120W IDT Highbay 60 Degree 857	120	60°	12000	5700	IP65
IND025	150W IDT Highbay 60 Degree 857	150	60°	15000	5700	IP65
IND026	180W IDT Highbay 60 Degree 857	180	60°	18000	5700	IP65

or visit: www.venturelightingeurope.com

LED Highbay Pro

50,000
hours life

5 year
warranty

Input Power (W)	200
Rated Life (Hours)	50,000
Luminous Efficacy (lm/W)	100
Colour Rendering (Ra)	80
Beam Angle (°)	120°
Input Voltage (V) ± 10%	220-240
Maximum Ambient Temperature (°C)	+50°C
Minimum Ambient Temperature (°C)	- 40°C
Lens Type	Polycarbonate
Case Type	Aluminium
Dimensions (mm)	Dia 235mm x H 260mm
Weight (kg)	5.4
IP Rating	IP65

Optional

Reflector	60, 70 or 90 Degrees
-----------	----------------------

PART NO. IND118

PART NO.	LUMENS	COLOUR TEMP.
IND118	20,000	5,000K

PART NO.	TYPE
IND113	100W Highbay Pro 120 Degree 840
IND116	100W Highbay Pro 120 Degree 850
IND114	150W Highbay Pro 120 Degree 840
IND117	150W Highbay Pro 120 Degree 850
IND115	200W Highbay Pro 120 Degree 840

ACCESSORIES

ACS010 – 60 Degree Highbay Pro Reflector

ACS011 – 70 Degree Highbay Pro Reflector

ACS012 – 90 Degree Highbay Pro Reflector



IND118 using ACS010 reflector



LED STREET LIGHTS

- 30W - 180W
- 50,000 hour life
- 5 year warranty
- 4,000K - 5,700K options
- Integrated Driver Technology (IDT)
- IP65
- 90° beam angle
- 10 kV surge protection



See the way to reduced maintenance and energy costs with VLED.

30W LED MINISTREET LIGHT 90 DEGREE

50,000
hours life

5 year
warranty



PART NO.	LUMENS	COLOUR TEMP.
STL001	2,700	5,700K
STL004	2,400	4,000K
STL012	2,660	4,000K

Performance Data

Input Power (W)	30
Rated Life (Hrs)	50000
Colour Temperature (K)	4000/5700
Colour Rendering (Ra)	80

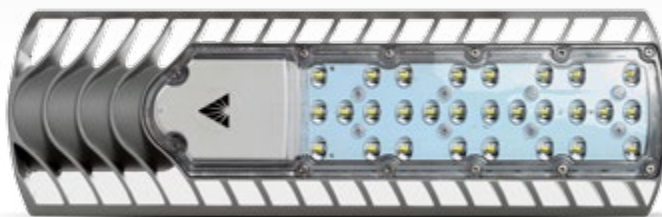
Physical Data

Dimensions (mm)	396 x 108 x 95 (Pole Mount 60)
IP Rating	IP65

45W LED MINISTREET LIGHT 90 DEGREE

50,000
hours life

5 year
warranty



PART NO.	LUMENS	COLOUR TEMP.
STL002	4,050	5,700K
STL005	3,600	4,000K

Performance Data

Input Power (W)	45
Rated Life (Hrs)	50000
Colour Temperature (K)	4000/5700
Colour Rendering (Ra)	80

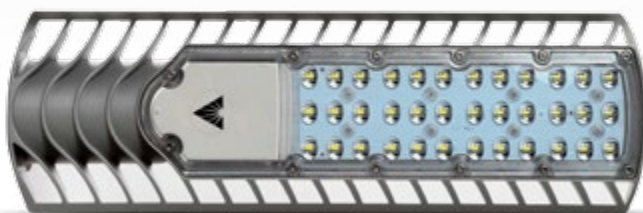
Physical Data

Dimensions (mm)	492 x 156 x 95 (Pole Mount 60)
IP Rating	IP65

60W LED MINISTREET LIGHT 90 DEGREE

50,000
hours life

5 year
warranty



PART NO.	LUMENS	COLOUR TEMP.
STL003	5,400	5,700K
STL006	4,800	4,000K

Performance Data

Input Power (W)	60
Rated Life (Hrs)	50000
Colour Temperature (K)	4000/5700
Colour Rendering (Ra)	80

Physical Data

Dimensions (mm)	492 x 156 x 95 (Pole Mount 60)
IP Rating	IP65

60W LED

IDT STREET LIGHT 90 DEGREE 857

50,000
hours life5 year
warranty

Performance Data

Input Power (W)	60
Rated Life (Hrs)	50000
Colour Temperature (K)	5700
Colour Rendering (Ra)	80

Physical Data

Dimensions (mm)	350 x 271 x 156 (Pole Mount 60)
IP Rating	IP65

PART NO.	LUMENS	COLOUR TEMP.
STL007	6,000	5,700K

90W LED

IDT STREET LIGHT 90 DEGREE 857

50,000
hours life5 year
warranty

Performance Data

Input Power (W)	90
Rated Life (Hrs)	50000
Colour Temperature (K)	5700
Colour Rendering (Ra)	80

Physical Data

Dimensions (mm)	461 x 271 x 156 (Pole Mount 60)
IP Rating	IP65

PART NO.	LUMENS	COLOUR TEMP.
STL008	9,000	5,700K

120W LED

IDT STREET LIGHT 90 DEGREE 857

50,000
hours life5 year
warranty

Performance Data

Input Power (W)	120
Rated Life (Hrs)	50000
Colour Temperature (K)	5700
Colour Rendering (Ra)	80

Physical Data

Dimensions (mm)	572 x 271 x 156 (Pole Mount 60)
IP Rating	IP65

PART NO.	LUMENS	COLOUR TEMP.
STL009	12,000	5,700K

150W LED

IDT STREET LIGHT 90 DEGREE 857

50,000
hours life5 year
warranty

Performance Data

Input Power (W)	150
Rated Life (Hrs)	50000
Colour Temperature (K)	5700
Colour Rendering (Ra)	80

Physical Data

Dimensions (mm)	683 x 271 x 156 (Pole Mount 60)
IP Rating	IP65

PART NO.	LUMENS	COLOUR TEMP.
STL010	15,000	5,700K

180W LED

IDT STREET LIGHT 90 DEGREE 857

50,000
hours life5 year
warranty

Performance Data

Input Power (W)	180
Rated Life (Hrs)	50000
Colour Temperature (K)	5700
Colour Rendering (Ra)	80

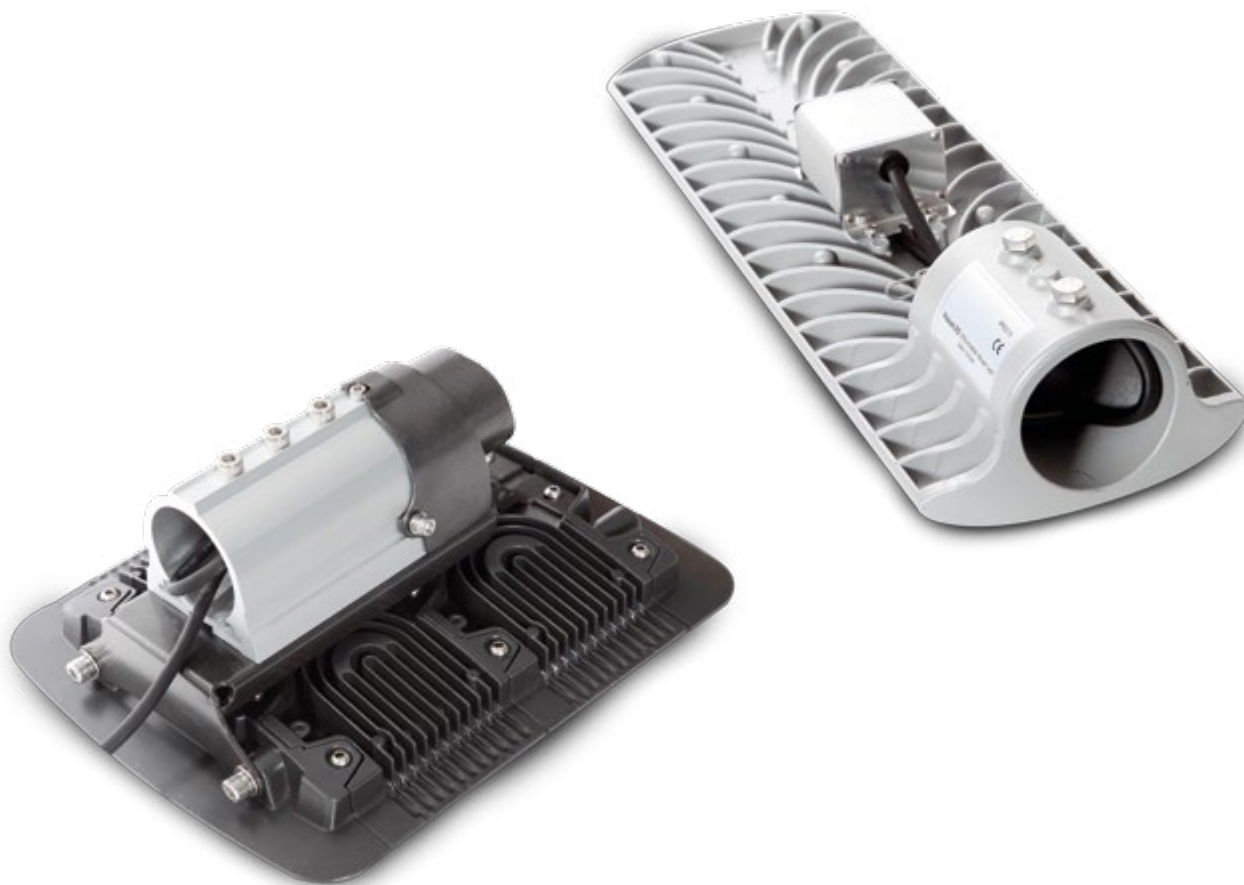
Physical Data

Dimensions (mm)	794 x 271 x 156 (Pole Mount 60)
IP Rating	IP65

PART NO.	LUMENS	COLOUR TEMP.
STL011	18,000	5,700K

LED STREET LIGHTS PRODUCT SELECTOR

PART NO.	DESCRIPTION	WATTAGE	BEAM ANGLE	LUMENS	COLOUR TEMP.	IP RATING
STL001	30W MINISTREET LIGHT 90 DEGREE 757	30	90°	2700	5700	IP65
STL004	30W MINISTREET LIGHT 90 DEGREE 740	30	90°	2400	4000	IP65
STL012	30W MINISTREET LIGHT 90 DEGREE 840	30	90°	2400	4000	IP65
STL002	45W MINISTREET LIGHT 90 DEGREE 757	45	90°	4050	5700	IP65
STL005	45W MINISTREET LIGHT 90 DEGREE 740	45	90°	3600	4000	IP65
STL003	60W MINISTREET LIGHT 90 DEGREE 757	60	90°	5400	5700	IP65
STL006	60W MINISTREET LIGHT 90 DEGREE 740	60	90°	4800	4000	IP65
STL007	60W IDT STREET LIGHT 90 DEGREE 857	60	90°	6000	5700	IP65
STL008	90W IDT STREET LIGHT 90 DEGREE 857	90	90°	9000	5700	IP65
STL009	120W IDT STREET LIGHT 90 DEGREE 857	120	90°	12000	5700	IP65
STL010	150W IDT STREET LIGHT 90 DEGREE 857	150	90°	15000	5700	IP65
STL011	180W IDT STREET LIGHT 90 DEGREE 857	180	90°	18000	5700	IP65



For more information on any of our LED lighting solutions call **01923 692600**

LED NON - CORROSIVES

- 25W - 60W
- 50,000 hour life
- 5 year warranty
- 4,000K / 5,000K options
- IK08
- IP65

**It's a tough choice with
our VLED Non-corrosive
Luminaires.**



25W LED

1200MM NON-CORROSIVE

50,000
hours life

5 year
warranty



PART NO.	LUMENS	COLOUR TEMP.
NCR001	2,400	4,000K
NCR009	2,400	5,000K

Performance Data

Input Power (W)	26.4
Rated Life (Hrs)	50000
Colour Temperature (K)	4000/5000
Colour Rendering (Ra)	80

Physical Data

Dimensions (mm)	1200 x 90 x 90
IP Rating	IP65

30W LED

1500MM NON-CORROSIVE

50,000
hours life

5 year
warranty



PART NO.	LUMENS	COLOUR TEMP.
NCR002	2,870	4,000K
NCR010	2,870	5,000K

Performance Data

Input Power (W)	31.6
Rated Life (Hrs)	50000
Colour Temperature (K)	4000/5000
Colour Rendering (Ra)	80

Physical Data

Dimensions (mm)	1574 x 90 x 90
IP Rating	IP65

52W LED

1200MM NON-CORROSIVE

50,000
hours life

5 year
warranty



PART NO.	LUMENS	COLOUR TEMP.
NCR003	5,235	4,000K
NCR011	5,235	5,000K

Performance Data

Input Power (W)	53.2
Rated Life (Hrs)	50000
Colour Temperature (K)	4000/5000
Colour Rendering (Ra)	80

Physical Data

Dimensions (mm)	1200 x 140 x 90
IP Rating	IP65

60W LED

1500MM NON-CORROSIVE

50,000
hours life

5 year
warranty



PART NO.	LUMENS	COLOUR TEMP.
NCR004	6,260	4,000K
NCR012	6,260	5,000K

Performance Data

Input Power (W)	65
Rated Life (Hrs)	50000
Colour Temperature (K)	4000/5000
Colour Rendering (Ra)	80

Physical Data

Dimensions (mm)	1500 x 140 x 90
IP Rating	IP65

LED TUBES

- 9W - 28W
- 30,000 hour life
- 3 year warranty
- 4,000K / 6,500K options
- 600mm - 1800mm lengths
- Electronic & magnetic ballast compatibility (refer to website)
- 4,000V protection
- 160° beam angle



Switch to VLED tubes.

9W LED TUBE 600MM T8 G13

30,000
hours life

3 year
warranty



PART NO.	LUMENS	COLOUR TEMP.
TBS008	800	4,000K
TBS009	800	6,500K

Performance Data

Input Power (W)	9
Rated Life (Hrs)	30000
Colour Temperature (K)	4000/6500
Colour Rendering (Ra)	80

Physical Data

Dimensions (mm)	600mm (T8) G13
IP Rating	IP20

18W LED TUBE 1200MM T8 G13

30,000
hours life

3 year
warranty



PART NO.	LUMENS	COLOUR TEMP.
TBS010	1,600	4,000K
TBS011	1,600	6,500K

Performance Data

Input Power (W)	18
Rated Life (Hrs)	30000
Colour Temperature (K)	4000/6500
Colour Rendering (Ra)	80

Physical Data

Dimensions (mm)	1200mm (T8) G13
IP Rating	IP20

22W LED TUBE 1500MM T8 G13

30,000
hours life

3 year
warranty



PART NO.	LUMENS	COLOUR TEMP.
TBS012	1,980	4,000K
TBS013	1,980	6,500K

Performance Data

Input Power (W)	22
Rated Life (Hrs)	30000
Colour Temperature (K)	4000/6500
Colour Rendering (Ra)	80

Physical Data

Dimensions (mm)	1500mm (T8) G13
IP Rating	IP20

28W LED TUBE 1800MM T8 G13

30,000
hours life

3 year
warranty



PART NO.	LUMENS	COLOUR TEMP.
TBS014	2,500	4,000K
TBS015	2,500	6,500K

Performance Data

Input Power (W)	28
Rated Life (Hrs)	30000
Colour Temperature (K)	4000/6500
Colour Rendering (Ra)	80

Physical Data

Dimensions (mm)	1800mm (T8) G13
IP Rating	IP20

LED RETROFIT LAMPS

- Integrated high power drivers so no control gear is needed
- Active cooling to maximise LED efficiency and lamp life
- High colour rendering index for quality output
- Installation in indoor and weatherproof fittings
- -40°C to 45°C ambient temperature range
- CE, RoHS, ECA and IP20 conformity



Fit VLED Retrofit today.

150W LED RETROFIT HIGH BAY LAMP

PROFESSIONAL



Up to 80% energy saving	5 year warranty
Life	50,000 hours
Energy rating	A+
Beam angle	>120°
Supply volts	220-240V~±6%
Supply frequency	50/60Hz
Dimming	Non dimmable
Dimensions	230 x 235mm
Operational ambient	-40°C to 45°C
Warm up time	3 seconds
Switching cycle	80,000

PART NO.	LUMENS	COLOUR TEMP.	BASE
RTF022	15,200	5,000K	E40
RTF032	15,500	5,700K	E40

100W LED RETROFIT HIGH BAY LAMP

PROFESSIONAL



Up to 80% energy saving	5 year warranty
Life	50,000 hours
Energy rating	A+
Beam angle	>120°
Supply volts	220-240V~±6%
Supply frequency	50/60Hz
Dimming	Non dimmable
Dimensions	200 x 225mm
Operational ambient	-40°C to 45°C
Warm up time	3 seconds
Switching cycle	80,000

PART NO.	LUMENS	COLOUR TEMP.	BASE
RTF021	10,200	5,000K	E40
RTF031	10,400	5,700K	E40

100W LED RETROFIT UNIVERSAL LAMP

PROFESSIONAL



Up to 80% energy saving	5 year warranty
Life	50,000 hours
Energy rating	A+
Beam angle	360°
Supply volts	220-240V~±6%
Supply frequency	50/60Hz
Dimming	Non dimmable
Dimensions	355 x 100mm
Operational ambient	-40°C to 45°C
Warm up time	3 seconds
Switching cycle	80,000

PART NO.	LUMENS	COLOUR TEMP.	BASE
RTF028	10,200	5,000K	E40
RTF038	10,400	5,700K	E40

80W LED RETROFIT UNIVERSAL LAMP

PROFESSIONAL



Up to 80% energy saving	5 year warranty
Life	50,000 hours
Energy rating	A+
Beam angle	360°
Supply volts	220-240V~±6%
Supply frequency	50/60Hz
Dimming	Non dimmable
Dimensions	305 x 100mm
Operational ambient	-40°C to 45°C
Warm up time	3 seconds
Switching cycle	80,000

PART NO.	LUMENS	COLOUR TEMP.	BASE
RTF027	8,600	5,000K	E40
RTF037	8,800	5,700K	E40

60W LED RETROFIT UNIVERSAL LAMP

PROFESSIONAL

Up to 80%
energy saving5 year
warranty

Life	50,000 hours
Energy rating	A+
Beam angle	360°
Supply volts	220-240V~±6%
Supply frequency	50/60Hz
Dimming	Non dimmable
Dimensions	305 x 100mm
Operational ambient	-40°C to 45°C
Warm up time	3 seconds
Switching cycle	80,000

PART NO.	LUMENS	COLOUR TEMP.	BASE
RTF026	6,300	5,000K	E40
RTF036	6,500	5,700K	E40

45W LED RETROFIT UNIVERSAL LAMP

PROFESSIONAL

Up to 80%
energy saving5 year
warranty

Life	50,000 hours
Energy rating	A+
Beam angle	360°
Supply volts	220-240V~±6%
Supply frequency	50/60Hz
Dimming	Non dimmable
E27 Dimensions	255 x 80mm
E40 Dimensions	265 x 80mm
Operational ambient	-40°C to 45°C
Warm up time	3 seconds
Switching cycle	80,000

PART NO.	LUMENS	COLOUR TEMP.	BASE
RTF025	5,050	5,000K	E27
RTF035	5,100	5,700K	E27
RTF046	5,050	5,000K	E40
RTF048	5,100	5,700K	E40

35W LED RETROFIT UNIVERSAL LAMP

PROFESSIONAL

Up to 80%
energy saving5 year
warranty

Life	50,000 hours
Energy rating	A+
Beam angle	360°
Supply volts	220-240V~±6%
Supply frequency	50/60Hz
Dimming	Non dimmable
E27 Dimensions	255 x 80mm
E40 Dimensions	265 x 80mm
Operational ambient	-40°C to 45°C
Warm up time	3 seconds
Switching cycle	80,000

PART NO.	LUMENS	COLOUR TEMP.	BASE
RTF024	3,950	5,000K	E27
RTF034	4,000	5,700K	E27
RTF045	3,950	5,000K	E40
RTF047	4,000	5,700K	E40

20W LED RETROFIT UNIVERSAL LAMP

PROFESSIONAL

Up to 80%
energy saving5 year
warranty

Life	50,000 hours
Energy rating	A+
Beam angle	360°
Supply volts	220-240V~±6%
Supply frequency	50/60Hz
Dimming	Non dimmable
Dimensions	185 x 80mm
Operational ambient	-40°C to 45°C
Warm up time	3 seconds
Switching cycle	80,000

PART NO.	LUMENS	COLOUR TEMP.	BASE
RTF023	2,150	5000K	E27
RTF033	2,180	5,700K	E27

RETROFIT LED PRODUCT SELECTOR

PART NO.	DESCRIPTION	WATTAGE	BEAM ANGLE	LUMENS	COLOUR TEMP.	BASE
RTF023	20W LED RETROFIT LAMP E27 850	20	360°	2150	5000	E27
RTF033	20W LED RETROFIT LAMP E27 860	20	360°	2180	5700	E27
RTF024	35W LED RETROFIT LAMP E27 850	35	360°	3950	5000	E27
RTF034	35W LED RETROFIT LAMP E27 860	35	360°	5700	5700	E27
RTF045	35W LED RETROFIT LAMP E40 850	35	360°	3950	5000	E40
RTF047	35W LED RETROFIT LAMP E40 860	35	360°	5700	5700	E40
RTF025	45W LED RETROFIT LAMP E27 850	45	360°	5050	5000	E27
RTF035	45W LED RETROFIT LAMP E27 860	45	360°	5100	5700	E27
RTF046	45W LED RETROFIT LAMP E40 850	45	360°	5050	5000	E40
RTF048	45W LED RETROFIT LAMP E40 860	45	360°	5100	5700	E40
RTF026	60W LED RETROFIT LAMP E40 850	60	360°	6300	5000	E40
RTF036	60W LED RETROFIT LAMP E40 860	60	360°	6500	5700	E40
RTF027	80W LED RETROFIT LAMP E40 850	80	360°	8600	5000	E40
RTF037	80W LED RETROFIT LAMP E40 860	80	360°	8800	5700	E40
RTF021	100W LED RETROFIT HIGH BAY LAMP E40 850	100	120°	10200	5000	E40
RTF031	100W LED RETROFIT HIGH BAY LAMP E40 857	100	120°	10400	5700	E40
RTF028	100W LED RETROFIT LAMP E40 850	100	360°	10200	5000	E40
RTF038	100W LED RETROFIT LAMP E40 860	100	360°	10400	5700	E40
RTF022	150W LED RETROFIT HIGH BAY LAMP E40 850	150	120°	15200	5000	E40
RTF032	150W LED RETROFIT HIGH BAY LAMP E40 857	150	120°	15500	5700	E40

LUMENS	LED RETROFIT LAMP	M/H, HPS, MBFU	STANDARD GLS (E27)	COMPACT FLUORESCENT (CFL)
2,000	20W	Replaces up to 70W	150W	26W
4,000	35W	Replaces up to 150W	—	57W
5,000	45W	Replaces up to 175W	300W	70W
6,000	60W	Replaces up to 200W	—	—
8,000	80W	Replaces up to 225W	—	—
9,000	100W	Replaces up to 250W	—	—
9,000	100W High bay	Replaces up to 250W	—	—
12,000	150W High bay	Replaces up to 400W	—	—

LED TUNNEL LIGHTS

- 60W - 180W
- 50,000 hour life
- 5 year warranty
- 4,000K - 5,700K options
- Integrated Driver Technology (IDT)
- IP65
- 90° beam angle
- 1.5 kV surge protection



**Look into a better way
to light tunnels with VLED.**

42 LED TUNNEL LIGHTS

60W LED

IDT TUNNEL LIGHT 90 DEGREE 857



50,000
hours life

5 year
warranty

PART NO.	LUMENS	COLOUR TEMP.
TNL001	6,000	5,700K

Performance Data

Input Power (W)	60
Rated Life (Hrs)	50000
Colour Temperature (K)	5700
Colour Rendering (Ra)	80

Physical Data

Dimensions (mm)	350 x 271 x 137
IP Rating	IP65

90W LED

IDT TUNNEL LIGHT 90 DEGREE 857



50,000
hours life

5 year
warranty

PART NO.	LUMENS	COLOUR TEMP.
TNL002	9,000	5,700K

Performance Data

Input Power (W)	90
Rated Life (Hrs)	50000
Colour Temperature (K)	5700
Colour Rendering (Ra)	80

Physical Data

Dimensions (mm)	461 x 271 x 137
IP Rating	IP65

120W LED

IDT TUNNEL LIGHT 90 DEGREE 857



50,000
hours life

5 year
warranty

PART NO.	LUMENS	COLOUR TEMP.
TNL003	12,000	5,700K

Performance Data

Input Power (W)	120
Rated Life (Hrs)	50000
Colour Temperature (K)	5700
Colour Rendering (Ra)	80

Physical Data

Dimensions (mm)	572 x 271 x 137
IP Rating	IP65

For more information on any of our LED lighting solutions call **01923 692600**

150W LED

IDT TUNNEL LIGHT 90 DEGREE 857

 50,000
hours life

 5 year
warranty

PART NO.	LUMENS	COLOUR TEMP.
TNL004	15,000	5,700K

Performance Data

Input Power (W)	150
Rated Life (Hrs)	50000
Colour Temperature (K)	5700
Colour Rendering (Ra)	80

Physical Data

Dimensions (mm)	683 x 271 x 137
IP Rating	IP65

180W LED

IDT TUNNEL LIGHT 90 DEGREE 857

 50,000
hours life

 5 year
warranty

PART NO.	LUMENS	COLOUR TEMP.
TNL005	18,000	5,700K

Performance Data

Input Power (W)	180
Rated Life (Hrs)	50000
Colour Temperature (K)	5700
Colour Rendering (Ra)	80

Physical Data

Dimensions (mm)	794 x 271 x 156
IP Rating	IP65

LED TUNNEL LIGHTS PRODUCT SELECTOR

PART NO.	DESCRIPTION	WATTAGE	BEAM ANGLE	LUMENS	COLOUR TEMP.	IP RATING
TNL001	60W IDT TUNNEL LIGHT 90 DEGREE 857	60	90°	6000	5700	IP65
TNL002	90W IDT TUNNEL LIGHT 90 DEGREE 857	90	90°	9000	5700	IP65
TNL003	120W IDT TUNNEL LIGHT 90 DEGREE 857	120	90°	12000	5700	IP65
TNL004	150W IDT TUNNEL LIGHT 90 DEGREE 857	150	90°	15000	5700	IP65
TNL005	180W IDT TUNNEL LIGHT 90 DEGREE 857	180	90°	18000	5700	IP65

or visit: www.venturelightingeurope.com

TECHNICAL INFORMATION ON LEDS

Comparing the efficiency of LEDs to traditional lamp sources requires a non-traditional approach. HID lamps, as well as other traditional lamps, are typically evaluated based on their source efficiency, which is measured with a bare lamp at room temperature.

This approach does not account for the impact on lamp performance from the luminaire in which the lamp is installed. A common measurement of source efficacy is lumens per watt, which reflects the amount of light produced by the source divided by the power required to operate it. Some LEDs and HID sources, such as high pressure sodium (HPS) and metal halide (MH), appear very efficient (e.g., 100 lumens/watt or higher) when one focuses solely on source efficiency. However, source efficiency does not accurately reflect how much light is actually delivered from the light source to the target area, such as a street or a parking lot.

System efficiency is measured with the lamp installed in a luminaire. It is based on how many lumens actually reach the target area, not simply how many lumens are emitted from the lamp. System efficiency is always lower than source efficiency due to four primary sources of light and power loss when a lamp is installed in a luminaire:

TRAPPED LIGHT

Traditional lamps, which emit light in all directions, require reflectors inside the luminaires to “bounce” as much light as possible away from the lamp and fixture components to the target area. However, not all light can be effectively redirected. Typically, 40% or more of the light emitted from the lamp is trapped within the luminaire and does not reach the target area.

PROTECTIVE COVERS AND LENSES

Luminaires almost always use some sort of secondary optics (such as tempered glass or acrylic) to help focus or redirect light, and to protect the lamps or LEDs from the environment. These materials do not allow light to pass with 100% efficiency, so system efficiency is reduced.

OPERATING TEMPERATURE

Many light sources become less effective as operating temperatures change. Because source efficiency is measured at a standard 25°C (or about 77°F), the actual operating efficiency under a range of outdoor temperatures may be significantly different. For example, LED lumen output in a typical operating environment where LED junction temperature (TJ) is very high (e.g., TJ = 75°C) can be 10-15% lower than lumen levels published by LED manufacturers, which are typically measured at TJ = 25°C.



For more information on any of our LED lighting solutions call **01923 692600**



POWER SUPPLIES

Most light sources require a ballast or driver to convert line power into a form which can be used by the lamp. These losses can vary from 5-25%, depending on the power supply used. This also results in lower system efficiency. When considering all of the factors that affect system efficiency, LEDs provide a clear advantage over HID lamps. Here is a summary comparison:

HID LAMP

Source efficiency is typically 120 lumens/watt or higher. However, losses from trapped light, protective covers and lenses, inefficient ballasts and unfavorable operating temperature typically result in a measured system efficiency of 30 lumens/watt or less.

LEDS

Source efficiency can be 100 lumens/watt or higher, depending on the type and manufacturer of the LED used. There are no losses from trapped light due to the focused output of the LED, and secondary optics and protective covers generally reduce output by only 25% or less. LED power drivers are also more generally efficient than HID ballasts, and reduce system efficiency by 10-15%. However, even when efficiency reductions due to high operating temperatures are included, LED system efficiency often remains above 50 lumens/watt or higher.

LUMEN DEPRECIATION & USEFUL LIFE

A second important factor involved in comparing the efficiency of LEDs to traditional lamp sources is accounting for the lumen depreciation of both sources. HID sources, especially metal halide, suffer from substantial lumen depreciation over relatively short periods:

	HIGH PRESSURE SODIUM	METAL HALIDE
LUMEN DEPRECIATION	20%	50%
MAXIMUM USEFUL LIFE (HOURS)	24,000	20,000 – 40,000

Note: The data above reflect typical performance and are intended for illustrative purposes.

The useful life of LEDs is typically defined as the operating time prior to 30% lumen depreciation, or 70% lumen maintenance (L70). This level of LED lumen depreciation has been widely adopted as the standard for useful life since a 30% decline in lumen levels is not easily detectable by most people. Although the time required to reach L70 lumen levels is directly related to the typical TJ, LED life expectancy can be 50,000–100,000 hours or more if TJ remains low. This means that you can enjoy higher LED system efficiency for many more years than traditional sources, and postpone costly maintenance required to change dim or failed traditional lamps.

WANT TO KNOW MORE?

Our knowledgeable and friendly technical support team will be happy to discuss any aspect of LED technology with you.

Call 01923 692600 today.



Venture Lighting Europe Ltd.
Trinity Court, Batchworth Island
Church Street, Rickmansworth
Hertfordshire
England WD3 1RT

T: +44 (0)1923 692600
F: +44 (0)1923 692659
E: sales@venturelighting.co.uk
W: www.venturelightingeurope.com